



Penmoelallt... a woodland lost in time.

BATS and MOTHS

Way Station 8

www.merthyrnats.org.uk

GPS location: N 51°46.26

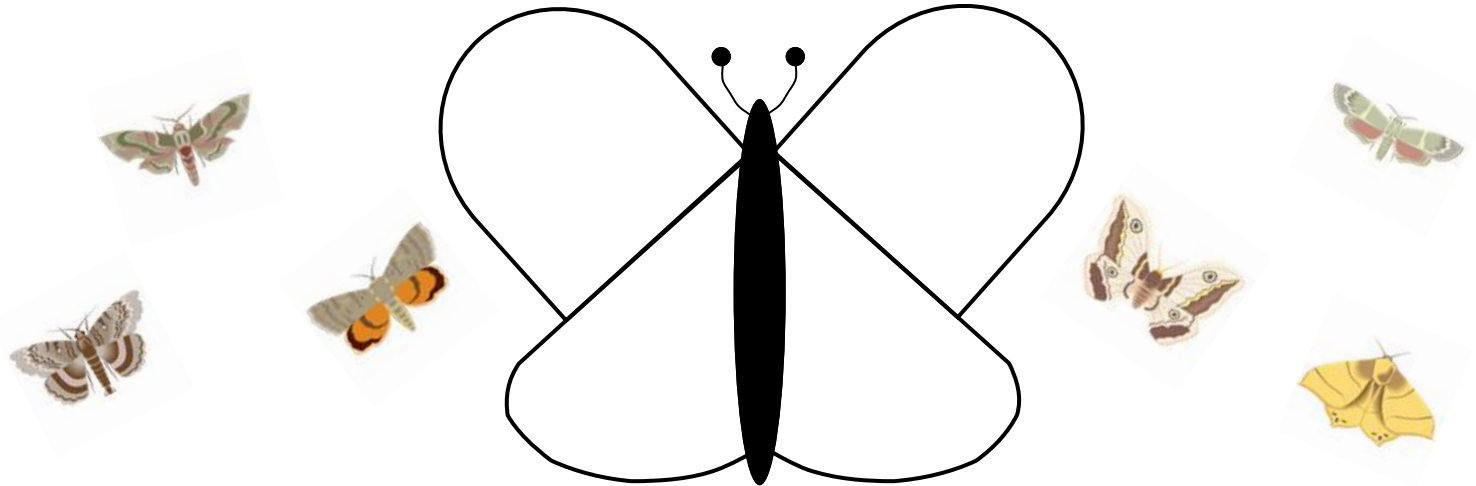
W 003°25.22

O.S. Co-ordinates:

SO 021 089

Try these fun activities:

1. Moths' wings look perfectly symmetrical. This means that they are the mirror image of each other. Have a go at designing your own moth. Remember — both sides need to be the same.



2. Bats paint a picture in their minds of what is around them in the dark by sending out a high-pitched sound and waiting for the sound to bounce back to them. Try playing this game to see how difficult it is to know what is around you if you can only use your ears:

- A) Select one of the logs in the Outdoor Classroom to sit on and put a set of keys on the ground next to the log.
- B) Choose someone to sit on the log and blindfold him or her. Everyone else sits in a wide circle around the blindfolded person.
- C) The people round the outside need to try and steal the keys without the person with the blindfold on hearing them and pointing at them.

3. Can you find all the words in this word search?

G	W	B	J	K	R	C	N	F	B	Z	E	H	M	P
S	Q	U	F	E	G	C	O	A	L	I	D	B	P	I
E	S	W	X	O	N	T	C	M	E	G	D	U	H	L
L	W	I	N	T	B	A	T	G	C	A	P	Y	I	C
A	H	N	C	B	R	E	U	S	T	U	R	B	P	O
C	I	G	E	D	A	S	R	T	D	U	J	N	O	C
S	L	S	X	B	G	R	N	D	I	T	F	G	Z	O
L	H	I	G	T	C	U	A	N	M	V	E	T	S	O
W	R	N	E	C	H	O	L	O	C	A	T	I	O	N
F	I	P	I	P	I	S	T	R	E	L	L	E	T	O
X	G	V	H	R	T	H	M	E	C	T	H	I	G	N
E	F	S	R	A	L	L	I	P	R	E	T	A	C	P



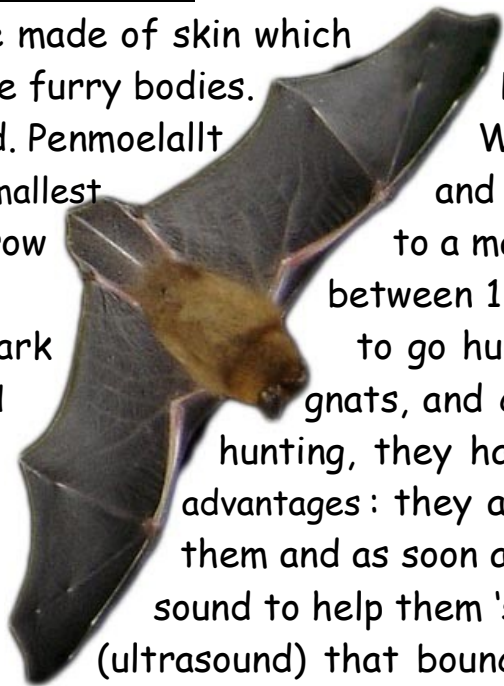
Moth
Bat
Scales
Echolocation
Pup
Nocturnal
Caterpillar
Wings
Pipistrelle
Cocoon



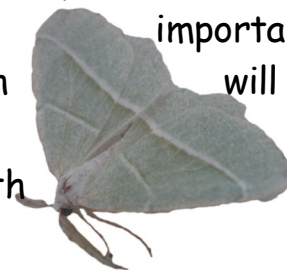
Thank you to all our dedicated volunteers, without whose help, the Penmoelallt Woodland Project would not have been possible.

BATS and MOTHS: some information

Pipistrelle Bats: Bats are the only mammals in the world that can fly. Their wings are made of skin which is stretched over their arms and fingers. They have furry bodies. Baby bats, known as 'pups', learn to fly at 3 weeks old. Penmoelallt Wood is home to many Pipistrelle bats. They are the smallest and most common of the British bats. Their bodies grow to a maximum of just 5cm, although their wingspan is usually between 19 and 25cm. Pipistrelle bats come out when it gets dark to go hunting. They eat small, flying insects such as moths and gnats, and can eat up to 3000 in one night! When they are not hunting, they hang upside-down from high places. This has two advantages: they are safe from other animals who might want to eat them and as soon as they let go, they can be in full flight. Bats use a sound to help them 'see' in the dark. The bats make a high noise (ultrasound) that bounces off solid objects and back to them. By calculating the amount of time this takes, they can work out how far away the object is. This is called 'echo-location'.



Moths: A moth is a type of flying insect. Moths have 4 wings each that are covered in tiny scales. Sometimes these scales are brightly coloured and sometimes they are more dull-looking but the colour is very important; bright colours send out the message to predators that the moth will not taste nice (whether this is true or not), dark colours can soak up heat and keep the moth warm. Some colours provide the moth with camouflage so that it blends in with its surroundings and some colours are for attracting a mate. The best time to see moths is May to August, but they are nocturnal creatures, which means that they come out at night. When it is dark, they use chemical senses to find each other. Some male moths can smell a female over 2km away! Many people get mixed up between butterflies and moths but most moths rest with their wings folded down over their backs, whereas butterflies rest with their wings closed together in an upright position. Moths start life as caterpillars and mature after hibernating in a cocoon. We get silk thread from certain types of moth cocoons.



Remember to keep the Countryside Code!

Be Safe - plan ahead and follow any signs.

- Leave gates & property as you find them.
- Leave machinery and livestock alone.
- Protect plants & animals and take your litter home.
- Keep dogs under close control.

You want to know more?

Visit these websites:

- <http://www.kidzone.ws/animals/bats/index.htm>
- <http://www.bats4kids.org/>
- <http://www.kidsbutterfly.org/>
- <http://www.biokids.umich.edu/>